

Transport

EJ2

Dr Emilija Lipovšek

Wherever you want to go, there's often more options how to get there. Means of transport have become faster and cheaper than before.

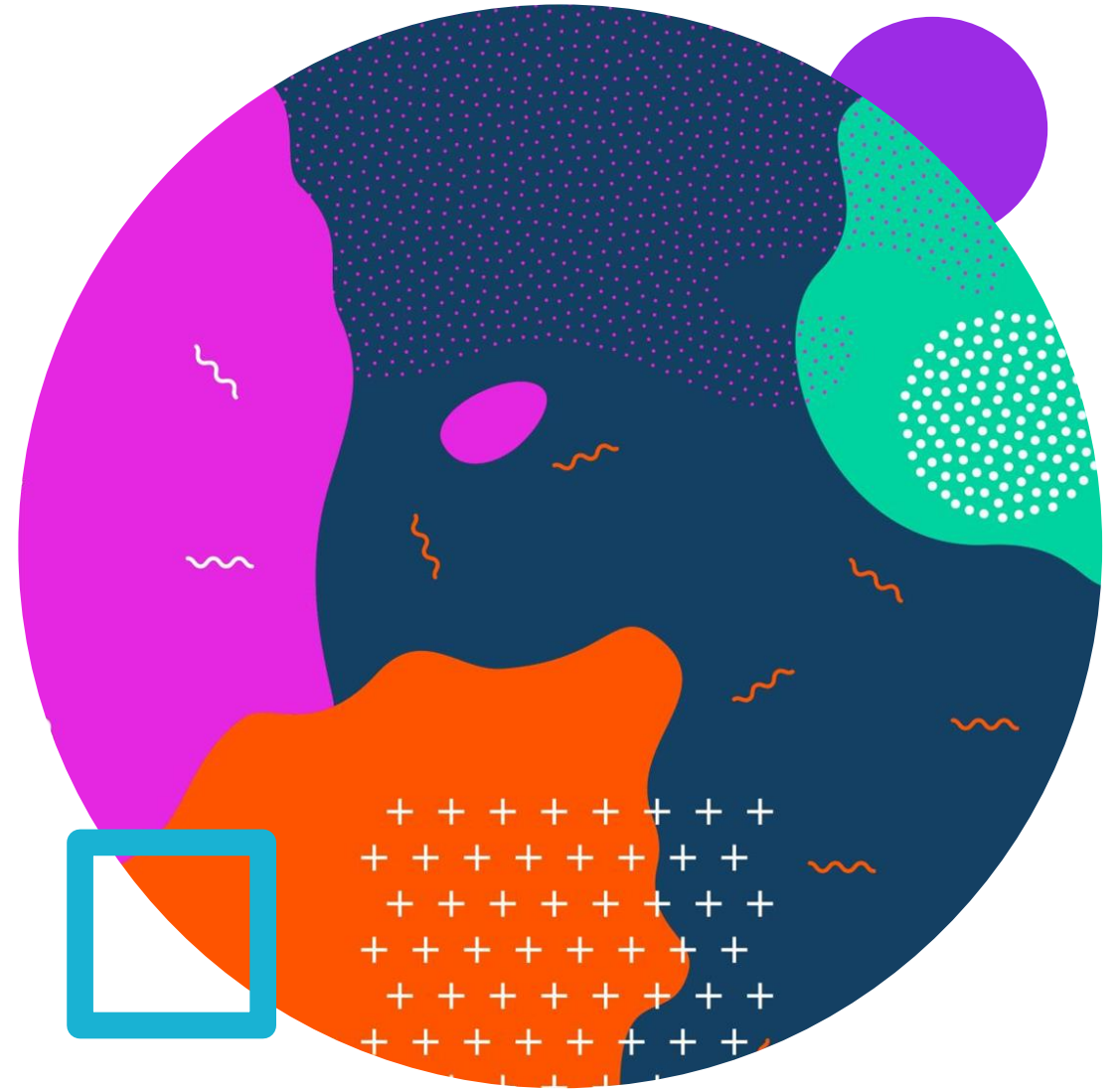




go TO – go to work,
go to cinema, go to
France, go to New
York

go ON – go on a
business trip, go on
a holiday

go X – go skiing,
go shopping



BY – go/travel by
car/bike/plane/train
IN – go in my/the
car
ON – go on foot
(walking)



get ON/OFF –
boat/plane/train/bu
s
get IN/OUT OF –
car/taxi



Don't go ... big
cities ... car. It's
difficult to park so
it's better to go ...
train. It takes you
... the city centre
and there you can
easily get ... the
bus.



Don't go **to** big
cities **by** car. It's
difficult to park so
it's better to go **by**
train. It takes you
to the city centre
and there you can
easily get **on** the
bus.



My class is going
... school trip next
week. We are
going ...
Budapest ...
coach and then
we're flying ...
● Madrid.



My class is going
on school trip
next week. We
are going to
Budapest by
coach and then
we're flying to
Madrid.



... bike or ... foot
every day. When
it's raining, he
goes ... his
colleague's car.
They also go ...
shopping together
after work.

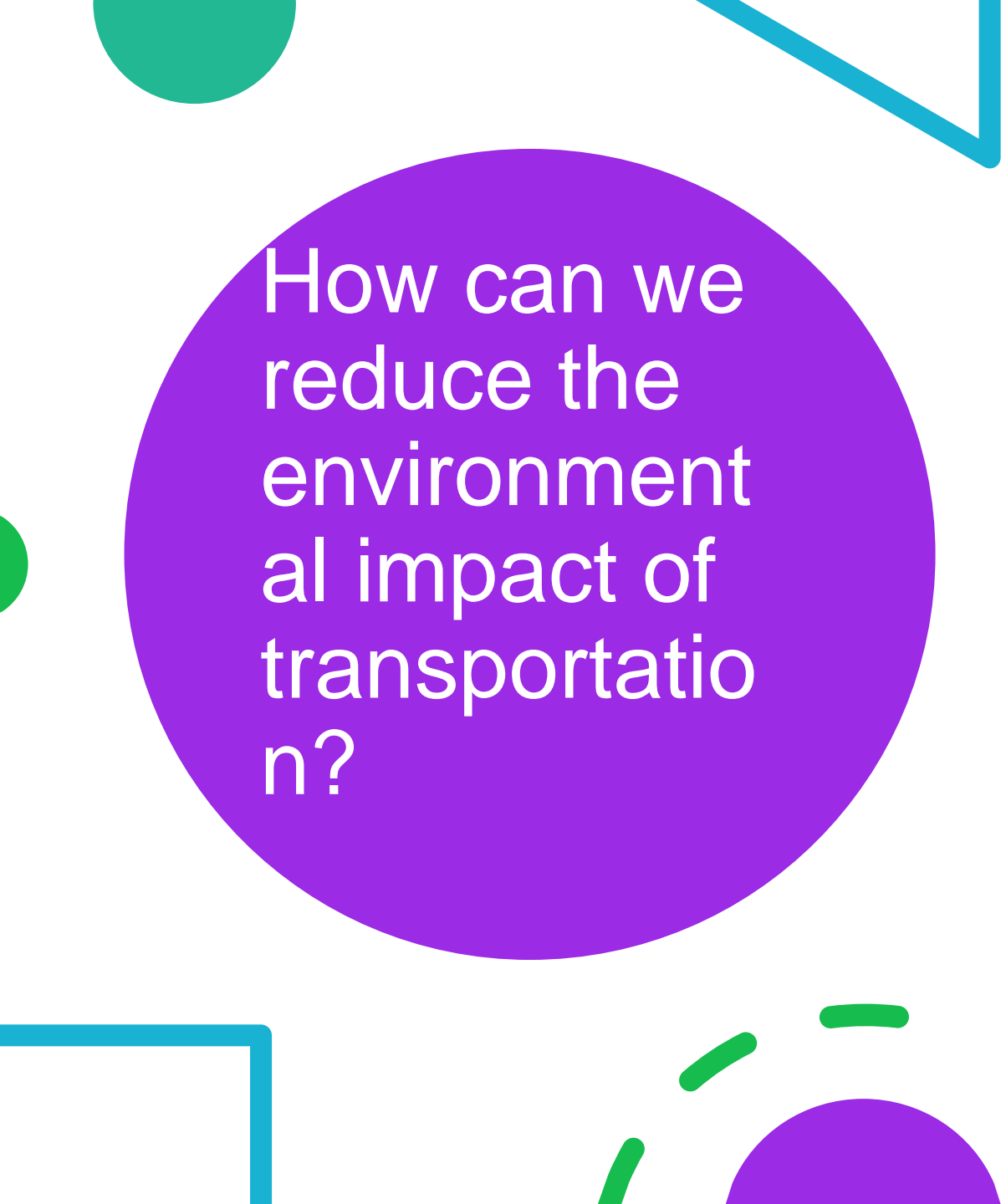


by bike or on foot
every day. When
it's raining, he
goes in his
colleague's car.
They also go X
shopping together
after work.



- How do you go to college?
- Which means of transport do you prefer?
- What is the longest trip you've been on?





How can we
reduce the
environmental impact of
transportation?

True/False

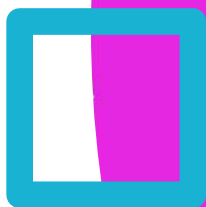
- Transport has deeply influenced economy.
- Transport uses natural resources.
- Walking and cycling damage the environment.
- Air quality is not influenced by motorised transportation.
- Trains are cleaner option than cars.
- CO2 emission is not dangerous.

passenger – person travelling
by bus/plane/train/car/boat

fare /fɛː/ - money paid for
transport (taxi fare, bus fare)

ticket: single or return (BE),
one-way or roundtrip (AE)

outbound/outgoing – way
there



Change from AE to BE:

The fare is \$19 one-way
and \$34 round-trip.

Can you tell me how to
get to downtown?

Take the subway from
there.

You could rent a car.

Take the escalators or
the elevator.

Go along the sidewalk.



The fare is \$19 single
and \$34 return.
Can you tell me how to
get to city centre?
Take the underground
from there.
You could hire a car.
Take the escalators or
the lift.
Go along the pavement.



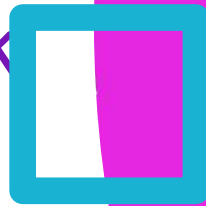
travel – going from one place to another

journey – travelling by land, sea or air

voyage – (long) travel by ship

trip – travelling to a place, a (short) stay, coming back

tour – visiting several places



to Paris takes two hours.
Air ... is getting more
expensive.
Have a safe ...!
We went on a ... to
Scotland to celebrate our
anniversary.
I ... to work 15 km every
day.
Let's go on a boat ... this
summer!
She is on a ... around
Africa.
Long sea ... is not so
common any more.



hours.

Air **travel** is getting more expensive.

Have a safe **trip/journey**!

We went on a **trip** to Scotland to celebrate our anniversary.

I **journey/travel** to work 15 km every day.

Let's go on a boat **trip** this summer!

She is on a **tour** around Africa.

Long sea **voyage** is not so common any more.

